

# SITALI SFE 100

SITALI SFE 100 Cod. 99422

Continuous single flow decentralised **C**ontrolled **M**echanical **V**entilation



## FEATURES

- Top quality ABS structure
- High-efficiency aerodynamic fan
- EC brushless motor with thermal protection
- Integrated humidity sensor
- Elegant design with minimalist lines
- Front cover; easy to remove for cleaning, without the use of tools
- Aerodynamic deflectors
- Very low energy consumption
- 4 ventilation speeds available



## SILENT FUNCTION

The most silent: only  $17 \text{ dB (A)}$   
Optimised for continuous 24/24h operation.



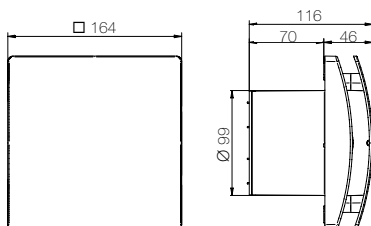
## VENTILATION

Decentralised CMV unit with continuous single flow,  $\text{Ø}100 \text{ mm}$ , with very low energy consumption, for replacing stale air in the humid environments with maximum acoustic comfort. Ideal for preventing problems of condensate and mould, which inevitably damage the structure and compromise the health of the occupants.



## HUMIDITY DETECTION

The unit is fitted with a humidity detection sensor, adjustable from 50% to 95% R.H. and a timer; this can be adjusted from 0 to approx. 30 minutes. The unit operates continuously at the minimum speed selected, which increases automatically to the average speed when the R.H. percentage exceeds the threshold set.



TECHNICAL DATA	SFE 100
Product code	99422
Hole diameter mm	100 (110 with telescopic tube)
Flow rate $\text{m}^3/\text{h}$	83 / 47 / 29 / 21
Consumption W	2,5 / 1,7 / 1,2 / 1
Sound pressure $\text{dB(A)}^*$	26 / 23 / 13 / 11
Environment temperature $^{\circ}\text{C max}$	50
IP protection rating	IPX4
Weight kg	0,6

220-240 V ~ 50-60Hz, aerulic performance measured according to ISO 5801 at 230V 50Hz, density of the air  $1.2 \text{ Kg/m}^3$  - data measured in accredited TUV Rheinland laboratory  
\* sound pressure level at 3m in free field