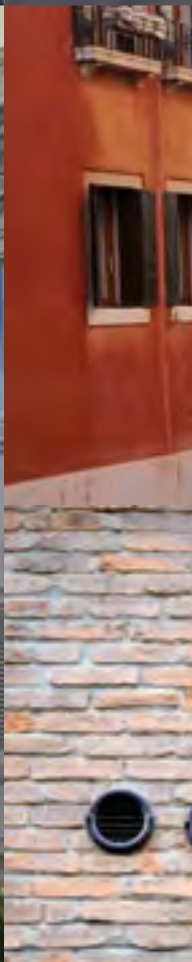


UNICO



UNICO® Without external unit



Design by
King and Miranda

UNICO INVERTER 9 SF Code 01068
UNICO INVERTER 9 HP Code 01060
UNICO INVERTER 12 SF Code 01067
UNICO INVERTER 12 HP Code 01052

FEATURES

Two power models: 2.3 kW – 2.7 kW

Available in two versions: SF (Cooling only) – HP (Heat pump)

Double A class efficiency rating

Ecologic gas R410A

Installation versatility: High or low wall-installation

Window installation is also possible*

Easy to install: Unico can be installed in a few minutes, with no outside masonry works

Wireless wall control (Optional)

Large flap for uniform distribution of air in the room

Multi-function remote control

24h timer



58 FIXED AIR CONDITIONER WITHOUT OUTDOOR UNIT

FUNCTIONS

Economy function: it enables energy saving by automatically optimizing the unit's performance.

Ventilation only function

Dehumidification only function

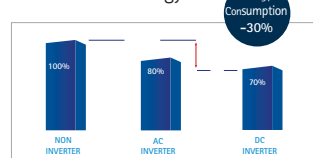
Auto function: adjusts operation parameters based on ambient temperature.

Sleep function: gradually increases the temperature setting and guarantees reduced noise level for greater comfort during the night.



INVERTER SYSTEM

Thanks to the Inverter technology, Unico guarantees up to 30% of energy saving in comparison to motors that apply traditional technology.



ENERGY CONSUMPTION



PURE SYSTEM 2

A multi-filtering system combines an electrostatic filter (which removes small particles such as smoke, dust, pollen, pet hair to prevent allergic reactions) with an activated carbon filter (which eliminates bad odours and inactivates any harmful gas that may be present).



WARM SYSTEM

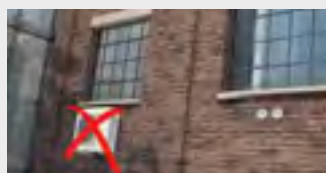
Air conditioner with heat pump. Thanks to this function you can heat a room, replacing traditional heaters during in-between seasons or combined with them for added warmth.



NO OUTDOOR UNIT

Our patented Unico technology has made it possible to combine into a single unit what is traditionally divided into two, the outdoor motor and the indoor split unit. Unico respects the architecture of the

buildings by blending in discreetly in their facades, and it also simplifies its installation procedures. From the outside, only the inlet and exhaust grilles remain visible.



CLASSIC SYSTEM

UNICO

* Window installation only with the specific supporting panel (not supplied)

UNICO 8.5 SF Code 01078
UNICO 8.5 HP Code 01076
UNICO 11.5 SF Code 01077
UNICO 11.5 HP Code 01075



Design by King and Miranda

FEATURES

Two power models: 2.1 kW – 2.6 kW
Available in two versions: SF (Cooling only) – HP (Heat pump)
Double A class
Ecologic gas R410A
Installation versatility: High or low wall-installation
Window installation is also possible*
Easy to install: Unico can be installed in a few minutes, with no outside masonry works
Wireless wall control (Optional)
Large flap for uniform distribution of air in the room
Multi-function remote control
24h timer



FIXED AIR CONDITIONER WITHOUT OUTDOOR UNIT

59

FUNCTIONS

Ventilation only function
Dehumidification only function
Auto function: adjusts operation parameters based on ambient temperature.
Sleep function: gradually increases the temperature setting and guarantees reduced noise level for greater comfort during the night.



PURE SYSTEM 2

A multi-filtering system combines an electrostatic filter (which removes small particles such as smoke, dust, pollen, pet hair to prevent allergic reactions) with an activated carbon filter (which eliminates bad odours and inactivates any harmful gas that may be present).



WARM SYSTEM

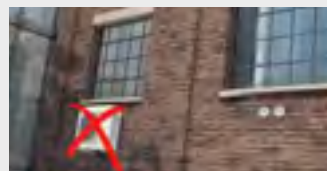
Air conditioner with heat pump. Thanks to this function you can heat a room, replacing traditional heaters during in-between seasons or combined with them for added warmth.



NO OUTDOOR UNIT

Our patented Unico technology has made it possible to combine into a single unit what is traditionally divided into two, the outdoor motor and the indoor split unit. Unico respects the architecture of the

buildings by blending in discreetly in their facades, and it also simplifies its installation procedures. From the outside, only the inlet and exhaust grilles remain visible.



CLASSIC SYSTEM



* Window installation only with the specific supporting panel (not supplied)

UNICO[®]

Without external unit

UNICO R 8.5 HP EH Code 01360

UNICO R 11.5 HP EH Code 01310

FEATURES

Two power models: 2.1 kW – 2.6 kW

Resistenza elettrica integrata: 2 kW

Double A class

Ecologic gas R410A

Installation versatility: High or low wall-installation

Window installation is also possible*

Easy to install: Unico can be installed in a few minutes, with no outside masonry works

Wireless wall control (Optional)

Multi-function remote control

24h timer

60

FIXED AIR CONDITIONER WITH WARM^R HEATING SYSTEM WITHOUT OUTDOOR UNIT

FUNCTIONS

Dehumidification only function

Auto function: adjusts operation parameters based on ambient temperature.

Sleep function: gradually increases the temperature setting and guarantees reduced noise level for greater comfort during the night.



PURE SYSTEM 2

A multi-filtering system combines an electrostatic filter (which removes small particles such as smoke, dust, pollen, pet hair to prevent allergic reactions) with an activated carbon filter (which eliminates bad odours and inactivates any harmful gas that may be present).



WARM^R SYSTEM

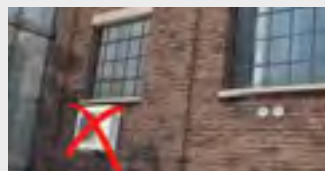
For outdoor temperatures below 2°C approx., heating is obtained by activating the electrical heaters and fan only. For temperatures above 2°C approx. heating is obtained by means of a heat pump. Control of both modes is completely automatic.



NO OUTDOOR UNIT

Our patented Unico technology has made it possible to combine into a single unit what is traditionally divided into two, the outdoor motor and the indoor split unit. Unico respects the architecture of the

buildings by blending in discreetly in their facades, and it also simplifies its installation procedures. From the outside, only the inlet and exhaust grilles remain visible.



CLASSIC SYSTEM



* Window installation only with the specific supporting panel (not supplied)



Design by
Dario Tanfoglio

UNICO EASY SF Code 01056
UNICO EASY HP Code 00981

FEATURES

- Two power models:** 2.1 kW – 2.0 kW
- Available in two versions:** SF (Cooling only) – HP (Heat pump)
- Ecologic gas R410A**
- Easy to install:** Unico can be installed in a few minutes, with no outside masonry works
- Removable remote control on board**
- 24h timer**



FLOOR STANDING AIR CONDITIONER WITHOUT OUTDOOR UNIT

61

FUNCTIONS

- Ventilation only function**
- Dehumidification only function**
- Auto function:** adjusts operation parameters based on ambient temperature.
- Sleep function:** gradually increases the temperature setting and guarantees reduced noise level for greater comfort during the night.



WARM SYSTEM

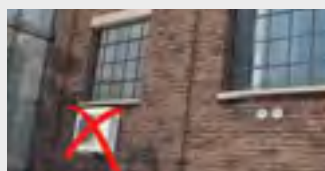
Air conditioner with heat pump. Thanks to this function you can heat a room, replacing traditional heaters during in-between seasons or combined with them for added warmth.



NO OUTDOOR UNIT

Our patented Unico technology has made it possible to combine into a single unit what is traditionally divided into two, the outdoor motor and the indoor split unit. Unico respects the architecture of the

buildings by blending in discreetly in their facades, and it also simplifies its installation procedures. From the outside, only the inlet and exhaust grilles remain visible.



CLASSIC SYSTEM

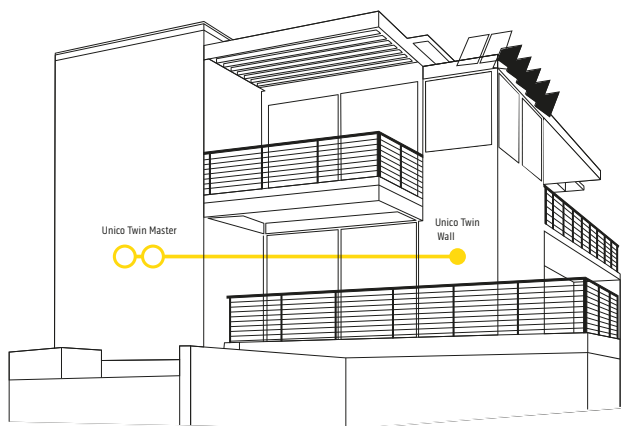
UNICO





UNICO TWIN





MASTER Code 01273
WALL Code 01274

Unico Twin® is the winner of the GOOD DESIGN AWARD 2013. Founded in Chicago in 1950, GOOD DESIGN is the oldest and most acknowledged international competition for design excellence.

SYSTEM FEATURES

Separate or combined operation: if simultaneous operation is selected, the two units will share the available power.***

Double A class

Ecologic gas R410A

Multi-function remote control

24h timer

Installation Note

Thanks to the fact that the same centre distance of air inlet and outlet holes has been maintained and that installation with 162 mm holes is also possible, Unico Twin Master can easily replace the Unico models previously installed.



64 MULTI-ROOM FIXED AIR CONDITIONER

SYSTEM FUNCTIONS

Ventilation only function

Dehumidification only function

Auto function: adjusts operation parameters based on ambient temperature.

Sleep function: gradually increases the temperature setting and guarantees reduced noise level for greater comfort during the night.



TWIN TECHNOLOGY

Thanks to our TWIN® technology, two-room climate control is achieved in perfect harmony with the aesthetics of the building and the design process is streamlined. Our Twin technology makes it possible to use the two units (Master unit and Wall unit) jointly or separately as needed, in heating mode or cooling mode.



PURE SYSTEM 2

A multi-filtering system combines an electrostatic filter (which removes small particles such as smoke, dust, pollen, pet hair to prevent allergic reactions) with an activated carbon filter (which eliminates bad odours and inactivates any harmful gas that may be present).



WARM SYSTEM

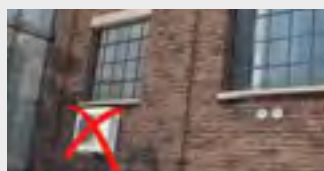
Air conditioner with heat pump. Thanks to this function you can heat a room, replacing traditional heaters during in-between seasons or combined with them for added warmth.



NO OUTDOOR UNIT

Our patented Unico technology has made it possible to combine into a single unit what is traditionally divided into two, the outdoor motor and the indoor split unit. Unico respects the architecture of the

buildings by blending in discreetly in their facades, and it also simplifies its installation procedures. From the outside, only the inlet and exhaust grilles remain visible.



CLASSIC SYSTEM



* Window installation only with the specific supporting panel (not supplied)
** In-house lab tests on Olimpia Splendid range
*** In simultaneous operation the indoor units are forced at minimum speed



Design by
King and Miranda

UNICO TWIN MASTER

Cooling power: 2.6 kW

Power output in HP (heat pump): 2.5 kW

Installation versatility: High or low wall-installation
Window installation is also possible*

Easy to install: Unico can be installed in a few minutes, with no outside masonry works
Large flap for uniform distribution of air in the room

UNICO TWIN WALL SPLIT

Cooling power: 2.5 kW

Power output in HP (heat pump): 2.2 kW

Up to 15%** quieter

WITHOUT OUTDOOR UNIT

65

EASY TO INSTALL

1

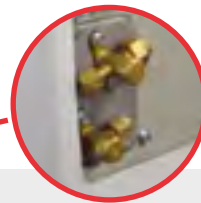
MASTER UNIT

Thanks to the practical template included in the package, Unico can be easily installed completely from the inside and in few minutes: the MASTER unit is installed by making two holes of 202 mm of diameter in the first room that needs air conditioning.



2

The master unit needs to be connected to the wall split, by the refrigerator taps housed on the right part of the unit.



3

WALL UNIT

Install the Wall Unit to the wall in the second room to be air conditioned.



UNICO TECHNICAL DATA



Product name			UNICO INVERTER 9 SF®	UNICO INVERTER 12 SF®	UNICO INVERTER 9 HP®	UNICO INVERTER 12 HP®
EAN Code			8021183010688	8021183010671	8021183010602	8021183010527
Product Code			01068	01067	01060	01052
Rated cooling capacity (1)	P rated	kW	2,3	2,7	2,30	2,7
Cooling capacity (min/max) (1)		kW	1,4 / 2,7	1,8 / 3,1	1,4 / 2,7	1,8 / 3,1
Rated heating power (1)	P rated	kW	-	-	2,40	2,70
Heating capacity (min/max) (1)		kW	-	-	1,4 / 2,7	1,8 / 3,0
Rated absorbed power in cooling mode (1)	PEER	kW	0,9	1,0	0,85	1,0
Rated absorbed power in cooling mode (min/max) (1)		kW	0,46 / 1,30	0,58 / 1,40	0,46 / 1,30	0,58 / 1,40
Rated current in cooling mode (1)		A	3,90	4,60	3,90	4,60
Current absorption in cooling mode (min/max) (1)		A	2,1 / 5,8	2,7 / 6,4	2,1 / 5,8	2,7 / 6,4
Rated absorbed power in heating mode (1)	PCOP	kW	-	-	0,8	0,8
Absorbed power in heating mode (min/max) (1)		kW	-	-	0,42 / 1,2	0,53 / 1,30
Rated absorption in heating mode (1)		A	-	-	3,40	3,80
Current absorption in heating mode (min/max) (1)		A	-	-	1,9 / 5,3	2,4 / 5,9
Rated energy efficiency index (1)	EERd		2,7	2,7	2,7	2,7
Rated efficiency coefficient (1)	COPd		-	-	3,2	3,2
Energy efficiency class in cooling mode (1)			A	A	A	A
Energy efficiency class in heating mode (1)			-	-	A	A
Thermostat off mode power consumption	PTO	W	12,00	12,00	12,00	12,00
Standby mode power consumption (EN 62301)	PSB	W	1	1	1	1
Energy consumption for double duct units (1) in cooling mode	QDD	kWh/h	1	1	1	1
Energy consumption for double duct units (1) in heating mode	QDD	kWh/h	-	-	0,80	0,80
Power supply voltage	V-F-Hz		230-1-50	230-1-50	230-1-50	230-1-50
Minimum/maximum power supply voltage	V		198 / 264	198 / 264	198 / 264	198 / 264
Maximum absorbed power in cooling mode (1)		W	1300	1400	1300	1400
Maximum current absorption in cooling mode (1)		A	5,8	6,4	5,8	6,4
Maximum absorbed power in heating mode (1)		W	-	-	1200	1300
Maximum current absorption in heating mode (1)		A	-	-	5,3	5,8
Power absorption with heating electric resistance		W	-	-	-	-
Maximum current absorption with heating electric resistance		A	-	-	-	-
Dehumidification rate		l/h	1	1,1	1	1,1
Air flow rate in cooling mode (max/med/min)		m³/h	490 / 430 / 360	490 / 430 / 360	490 / 430 / 360	490 / 430 / 360
Air flow rate in heating mode (max/med/min)		m³/h	-	-	490 / 430 / 360	490 / 430 / 360
Room air flow rate with electrical heating element		m³/h				
External air flow rate in cooling mode (max/min)		m³/h	520 / 350	520 / 350	520 / 350	500 / 340
External air flow rate in heating mode (max/min)		m³/h	-	-	520 / 350	500 / 340
Indoor ventilation speed			3	3	3	3
Outdoor ventilation speed			6	6	6	6
Diameter of wall holes	mm		162 / 202	162 / 202	162 / 202	162 / 202
Electric heating element			-	-	-	-
Maximum remote control range (distance/angle)	m / °		8 / ±80°	8 / ±80°	8 / ±80°	8 / ±80°
Tank capacity	l		-	-	-	-
Dimensions (Width x H x Depth) (without packaging)	mm		902 x 506 x 229	902 x 506 x 229	902 x 506 x 229	902 x 506 x 229
Dimensions (Width x H x Depth) (with packaging)	mm		980 x 610 x 350	980 x 610 x 350	980 x 610 x 350	980 x 610 x 350
Weight (without packaging)	Kg		39	39	39	40
Weight (with packaging)	Kg		43	43	43	43
Sound power (indoor only) (EN 12102)	LWA	dB(A)	57	58	57	58
Sound pressure (Min Max) (2)		dB(A)	33-42	33-43	33-42	33-43
Degree of protection casing			IP 20	IP 20	IP 20	IP 20
Refrigerant gas	Tipo-Type		R410A	R410A	R410A	R410A
Overall heating potential	GWP	kgCO2 eq.	1975	1975	1975	1975
Refrigerant gas charge		kg	0,57	0,57	0,57	0,58
Maximum operating pressure		MPa	3,6	3,6	3,6	3,6
Maximum operating pressure (low pressure side)		MPa	-	-	-	-
Power supply cable (no. of poles x section m²)			3 x 1,5	3 x 1,5	3 x 1,5	3 x 1,5
Fuse			10AT	10AT	10AT	10AT









OPERATING LIMITS

Indoor Ambient Temperature	Maximum operating temperature in cooling mode	DB 35°C - WB 24°C
	Minimum operating temperature in cooling mode	DB 18°C
	Maximum operating temperature in heating mode	DB 27°C
	Minimum operating temperature in heating mode	-
Outdoor Ambient Temperature	Maximum operating temperature in cooling mode	DB 43°C - WB 32°C
	Minimum operating temperature in cooling mode	DB -10°C
	Maximum operating temperature in heating mode	DB 24°C - WB 18°C
	Minimum operating temperature in heating mode	DB -15°C

(1) TEST CONDITIONS: data refer to regulation EN14511

(2) Test declarations in semi-anechoic chamber at 2m of distance

*Thanks to the fact that the same centre distance of air inlet and outlet holes has been maintained and that installation with 162 mm holes is also possible, Unico Twin Master can easily replace the Unico Star and Unico Sky models previously installed.

							
UNICO 8,5 SF®	UNICO 11,5 SF®	UNICO 8,5 HP®	UNICO 11,5 HP®	UNICO R 8,5 HP EH®	UNICO R 11,5 HP EH®	UNICO EASY SF®	UNICO EASY HP®
8021183010787	8021183010770	8021183010763	8021183010756	8021183013603	8021183013108	8021183010565	8021183009811
01078	01077	01076	01075	01360	01310	01056	00981
2,1	2,6	2,1	2,6	2,1	2,6	2,1	2,0
-	-	-	-	-	-	-	-
-	-	2,10	2,50	2,10	2,50	-	2,00
-	-	-	-	-	-	-	-
0,8	0,9	0,8	0,9	0,8	0,9	0,8	0,8
-	-	-	-	-	-	-	-
3,40	4,30	3,40	4,30	3,40	4,30	3,50	3,40
-	-	-	-	-	-	-	-
-	-	0,7	0,8	0,7	0,8	-	0,7
-	-	-	-	-	-	-	-
-	-	2,90	3,50	2,90	3,50	-	3,15
-	-	-	-	-	-	-	-
2,7	2,7	2,7	2,7	2,7	2,7	2,7	2,6
-	-	3,1	3,1	3,1	3,1	-	2,8
A	A	A	A	A	A	A	A
-	-	A	A	A	A	-	B
14,00	14,00	14,00	14,00	14,00	14,00	14,00	14,00
1	1	1	1	1	1	1	1
1	1	1	1	1	1	1	1
-	-	0,70	0,80	0,70	0,80	-	0,71
230-1-50	230-1-50	230-1-50	230-1-50	230-1-50	230-1-50	230-1-50	230-1-50
198 / 264	198 / 264	198 / 264	198 / 264	198 / 264	198 / 264	196 / 253	216 / 244
860	1080	890	1080	890	1080	879	1000
3,8	4,8	3,9	4,8	3,9	4,8	3,9	4,2
-	-	850	1055	850	1055	-	900
-	-	3,8	4,7	3,8	4,7	-	3,8
-	-	-	-	2000	2000	-	-
-	-	-	-	8,7	8,7	-	-
0,9	1,1	0,9	1,1	0,9	1,1	1	0,9
490 / 430 / 360	490 / 430 / 360	490 / 430 / 360	490 / 430 / 360	490 / 430 / 360	490 / 430 / 360	328 / 300 / 274	310 / 280 / 250
-	-	410 / 350 / 270	450 / 400 / 330	410 / 350 / 270	490 / 400 / 330	-	310 / 280 / 250
-	-	-	-	490	490	-	-
520 / 350	520 / 350	520 / 350	500 / 340	520 / 350	500 / 340	429 / 258	430 / 350 / 260
-	-	520 / 350	500 / 340	520 / 350	500 / 340	-	400 / 350 / 260
3	3	3	3	3	3	3	3
3	3	3	3	3	3	2	3
162 / 202	162 / 202	162 / 202	162 / 202	162 / 202	162 / 202	162	162
-	-	-	-	2000	2000	-	-
8 / ±80°	8 / ±80°	8 / ±80°	8 / ±80°	8 / ±80°	8 / ±80°	8 / ±80°	8 / ±80°
-	-	-	-	-	-	-	-
902 x 516 x 229	902 x 516 x 229	902 x 516 x 229	902 x 516 x 229	902 x 516 x 229	902 x 516 x 229	693 x 666 x 276	693 x 666 x 276
980 x 610 x 350	980 x 610 x 350	980 x 610 x 350	980 x 610 x 350	980 x 610 x 350	980 x 610 x 350	768 x 806 x 374	768 x 806 x 374
40	40	40	40	40	40	39	39
44	44	44	44	44	44	43	43
56	57	56	57	56	57	57	59
33-41	33-42	33-41	33-42	33-41	33-42	33-42	33-44
IP 20	IP 20	IP 20	IP 20	IP 20	IP 20	IP 20	IP 20
R410A	R410A	R410A	R410A	R410A	R410A	R410A	R410A
1975	1975	1975	1975	1975	1975	1975	1975
0,48	0,54	0,65	0,55	0,65	0,55	0,55	0,51
3,6	3,6	3,6	3,6	3,6	3,6	3,6	3,6
-	-	-	-	-	-	-	-
3 x 1,5	3 x 1,5	3 x 1,5	3 x 1,5	3 x 1,5	3 x 1,5	3 x 1,5	3 x 1,5
10AT	10AT	10AT	10AT	10AT	10AT	10AT	10AT

DB 35°C - WB 24°C	DB 35°C - WB 24°C	DB 32°C - WB 24°C
DB 18°C	DB 18°C	DB 18°C
DB 27°C	DB 27°C	DB 27°C
-	-	DB 16°C
DB 43°C - WB 32°C	DB 43°C - WB 32°C	DB 43°C - WB 32°C
DB -10°C	DB -10°C	DB 18°C - WB 16°C
DB 24°C - WB 18°C	DB 24°C - WB 18°C	DB 24°C - WB 18°C
DB -15°C	DB -15°C	DB -10°C - WB 11°C

UNICO TWIN® TECHNICAL DATA master



wall



Product name		UNICO TWIN® MASTER	
EAN Code		8021183012736	
Product Code		01273	
Rated cooling capacity (1)	P rated	kW	2,6
Rated heating power (1)	P rated	kW	2,5
Rated absorbed power in cooling mode (1)	PEER	kW	0,9
Rated current in cooling mode (1)		A	4,3
Rated absorbed power in heating mode (1)	PCOP	kW	0,8
Rated current in heating mode (1)		A	3,5
Rated energy efficiency index (1)	EERd		2,7
Rated efficiency coefficient (1)	COPd		3,1
Energy efficiency class in cooling mode (1)			A
Energy efficiency class in heating mode (1)			A
Thermostat off mode power consumption	PTO	W	14,0
Standby mode power consumption (EN 62301)	PSB	W	1,0
Energy consumption for double duct units (1) in cooling mode	QDD	kWh/h	0,9
Energy consumption for double duct units (1) in heating mode	QDD	kWh/h	0,8
Power supply voltage	V-F-Hz		230-1-50
Minimum/maximum power supply voltage	V		198 / 264
Maximum absorbed power in cooling mode (1)		W	1200
Maximum current absorption in cooling mode (1)		A	5,4
Maximum absorbed power in heating mode (1)		W	1080
Maximum current absorption in heating mode (1)		A	4,8
Dehumidification rate		l/h	1,1
Air flow rate in cooling mode (max/med/min)		m³/h	490 / 430 / 360
Air flow rate in heating mode (max/med/min)		m³/h	450 / 400 / 330
External air flow rate in cooling mode (max/med/min)		m³/h	500 / 370 / 340
External air flow rate in heating mode (max/med/min)		m³/h	500 / 370 / 340
Indoor ventilation speed			3
Outdoor ventilation speed			3
Diameter of wall holes		mm	202**
Dimensions (Width x H x Depth) (without packaging)		mm	902 x 516 x 229
Weight (without packaging)		Kg	40,5
Sound power (indoor only) (EN 12102)	LWA	dB(A)	57
Sound pressure (Min Max) (2)		dB(A)	33 - 42
Degree of protection casing			IP 20
Refrigerant gas	Tipo-Type		R410A
Overall heating potential	GWP	kgCO2 eq.	1975
Refrigerant gas charge		kg	0,85
Power supply cable (no. of poles x section m²)			3 x 1,5

OPERATING LIMITS

Indoor Ambient Temperature	Maximum operating temperature in cooling mode	DB 35°C - WB 24°C
	Minimum operating temperature in cooling mode	DB 18°C
	Maximum operating temperature in heating mode	DB 27°C
	Minimum operating temperature in heating mode	-
Outdoor Ambient Temperature	Maximum operating temperature in cooling mode	DB 43°C - WB 32°C
	Minimum operating temperature in cooling mode	DB -10°C
	Maximum operating temperature in heating mode	DB 24°C - WB 18°C
	Minimum operating temperature in heating mode	DB -15°C

Optimal operation and efficiency are guaranteed with the unit operating in alternating mode. In simultaneous operation, room air ventilation speeds are forced to minimum speed. Performance is measured with 5m long pipes.

Product name		UNICO TWIN® WALL	
EAN Code		8021183012743	
Product Code		01274	
Rated cooling capacity (1)		kW	2,5
Rated heating power (1)		kW	2,2
Rated absorbed power in cooling mode (1)		kW	0,9
Rated current in cooling mode (1)		A	4,2
Rated absorbed power in heating mode (1)		kW	0,7
Rated current in heating mode (1)		A	3,2
Maximum absorbed power in cooling mode (1)		W	1200
Maximum current absorption in cooling mode (1)		A	5,4
Maximum absorbed power in heating mode (1)		W	1080
Maximum current absorption in heating mode (1)		A	4,8
Dehumidification rate		l/h	1,0
Air flow rate in cooling mode (max/med/min)		m³/h	450 / 400 / 340
Air flow rate in heating mode (max/med/min)		m³/h	450 / 400 / 340
Indoor ventilation speed			3
Dimensions (Width x H x Depth) (without packaging)		mm	760 x 253 x 190
Weight (without packaging)		Kg	8
Sound power (indoor only) (EN 12102)		LWA dB(A)	56
Sound pressure (Min Max) (2)		dB(A)	33 - 41
Degree of protection casing			IP X1
Connection cable (no. of poles x section m²)			3 x 1
Diameter of tube in liquid connection line		inch. - mm	1/4 - 6,35
Diameter of tube in gas connection line		inch. - mm	3/8 - 9,52
Maximum pipe length		m	10
Maximum difference in level		m	5

(1) TEST CONDITIONS: data refer to regulation EN14511

(2) Test declarations in semi-anechoic chamber at 2m of distance

*Thanks to the fact that the same centre distance of air inlet and outlet holes has been maintained and that installation with 162 mm holes is also possible, Unico Twin Master can easily replace the Unico Star and Unico Sky models previously installed.

Code B1005

SERIAL INTERFACE FOR UNICO AND UNICO EASY HP



Interface to wirelessly control desired temperature, fan speed, air louver operation, fresh air contact. Cooling/heating mode and fan speed can also be controlled wired. Presence contact, Sleep mode or fresh air contact available.

Code B1011

SERIAL INTERFACE FOR UNICO INVERTER

Interface to wirelessly control desired temperature, fan speed or air louver operation. Cooling/heating mode and fan speed can also be controlled wired. Presence contact or Economy mode available. Alarm signal output in case of malfunction.

Code B1006

WIRELESS WALL CONTROL FOR UNICO AND UNICO EASY HP



Wall control with battery power supply for wireless setting of desired temperature, fan speed, air louver and fresh air operation.

Code B1012

WIRELESS WALL CONTROL FOR UNICO INVERTER

Wall control with battery power supply for wireless setting of desired temperature, fan speed and air louver operation.

UNICO ACCESSORIES

69

Code B0565

UNICO INVERTER AND UNICO INSTALLATION KIT



Installation kit for Unico Inverter and On Off (1:1 scale template, wall bracket, PP universal sheets, internal flanges Ø 200 mm, pair of foldable external grids Ø 200 mm, pair of caps).

Code B0564

Ø 160 MM GRIDS KIT FOR UNICO INVERTER AND UNICO

Includes a pair of external foldable grids, a pair of internal flanges and the template.

Code B0149

UNICO RAIN PROTECTION KIT

Unico rain protection kit (for Unico Easy only).

CHROMATIC KIT FOR UNICO TWIN WALL



Code B0365

Pearl chrome kit



Code B0367

Silver chrome kit