



Bi2+ PLUS

SLR+ Inverter fan coil with radiant panel



Bi2+ is the winner of the iF product design award 2013 in the buildings category, selected by a panel of experts and designers of international fame.

Design by Dario Tanfoglio



Bi2+ was awarded the REDDOT DESIGN HONOURABLE MENTION 2013, for the perfect integration between technology and design.

18



INVERTER SYSTEM

The onboard tangential fan is driven by an inverter DC motor, thus the Bi2+ power consumption can be reduced up to 60% compared with the traditional AC motors. The electronic control adjusts the fan speed depending on the thermal load and allows therefore to constantly minimize the electrical consumption to a minimum of 3W.



COMPACT TECHNOLOGY

Means constant care to every detail, to design and to components engineering. Products are therefore invented, designed and created with extremely compact sizes. Bi2+ is only 12.9 cm deep, versus the 20-25 cm of a traditional fan coil.



METAL FRAME

The exquisite look, its lightness and the solidity of Bi2+ are design characteristics made possible by the painted metal frame and the aluminum grid.



RADIANT TUBE+

Once the set point is reached with the help of the fan, the temperature is maintained through the radiant effect only, with no electrical consumption. The Radiant Tube+ Technology allows to increase the heat exchange thanks to the direct contact with the front panel, to decrease consistently the fan coil weight, to diminish the thermal inertia, while maximising the radiant effect on the whole panel.



HE COIL

High efficiency coil invented, designed and developed by Olimpia Splendid; it allows to increase the heat exchange efficiency by 5% compared with a traditional coil. The maximization of the heat exchange and the optimization of the temperature profiles lead to a higher air outlet temperature, allowing their use in every low water temperature comfort system.



SILENT SYSTEM

Silence is guaranteed by the DC motor, that always minimizes the fan speed depending on the set point. The on board control manages the SLEEP function disabling the fan operation.

FEATURES

Cooling, dehumidifying, heating and air cleaning

Compact: only 12.9 cm deep

Range includes 5 models: SLR+ 200, SLR+ 400, SLR+ 600, SLR+ 800, SLR+ 1000

Power input at minimum speed: from 3W

Electronic control on board (Choose between independent electronic control or remote control)

Sleep function

A Class: thanks to the inverter motor, to the high performing tangential fan and to the efficient heat exchange, the products of the bi2+ range belong to the energy efficiency A class**

Installation versatility: on wall or floor standing



Wall installation



Floor installation

Easy maintenance: easy-to-remove air filters and front access to the fan make cleaning easier.

AVAILABLE COLORS

- White
- Silver

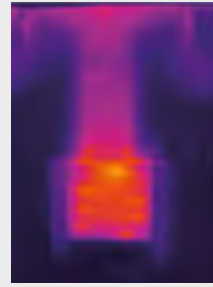


THERMOGRAPHY COMPARISON BETWEEN FAN COIL WITH TRADITIONAL RADIANT PLATE AND WITH THE TUBE RADIANT PANEL TUBE +

(at the following condition: air temperature 20 °C, water inlet 50 °C)



Other radiant devices

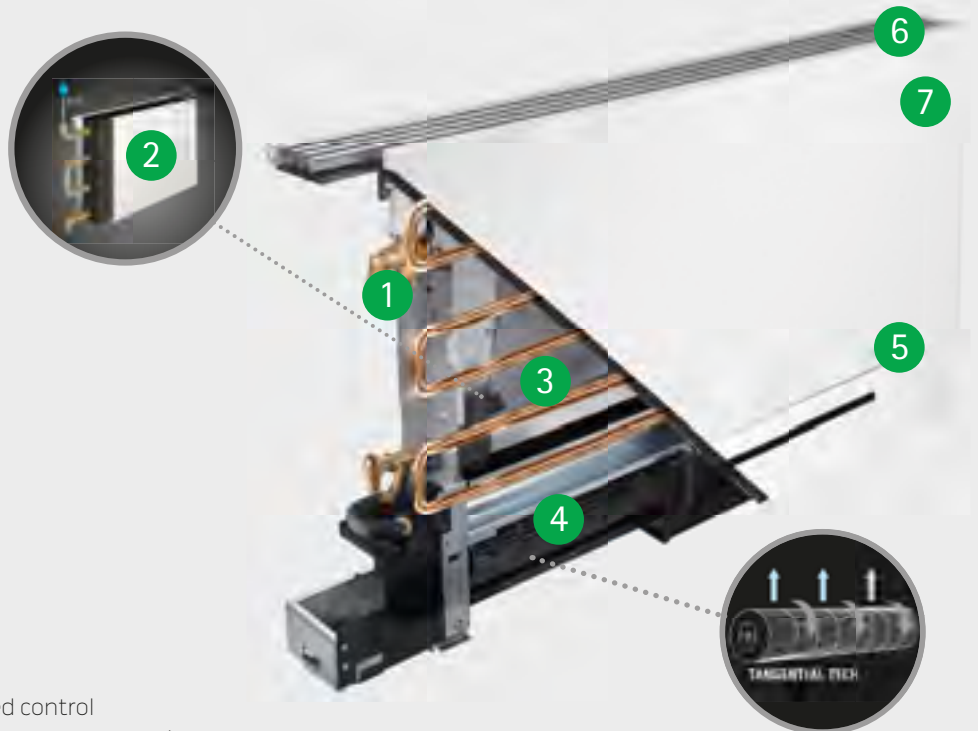


Tube radiant panel



* Customised colours: specifically requested colours only upon delivery terms and minimum lot previously agreed.
 **According to current EUROVENT energy standards

TECHNICAL FEATURES



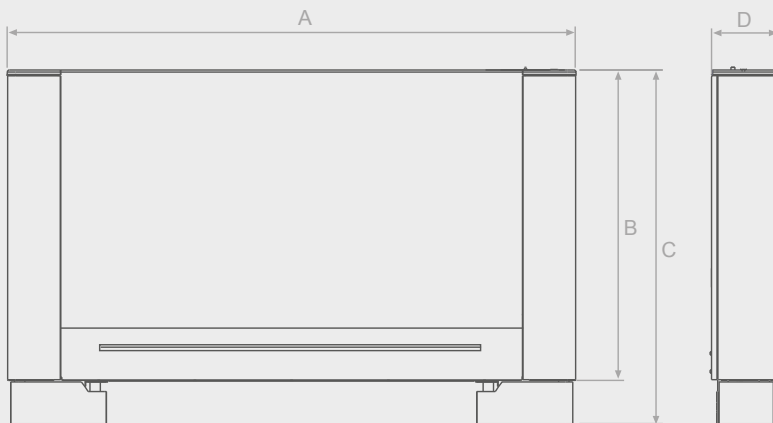
- 1 Electrothermal fuse
- 2 Tube radiant panel
- 3 HE Coil
- 4 High efficiency tangential fan
- 5 DC inverter motor
- 6 Electronic control on unit
- 7 Automatic modulating fan speed control for maximum comfort and minimum consumption.



MODEL		B12+ 2 pipes SLR+ version with radiant panel				
		SLR+200	SLR+400	SLR+600	SLR+800	SLR+1000
White with electronic autonomous control	code	01252	01253	01254	01255	01256
White with control for remote keypad	code	01300	01301	01302	01303	01304
Silver with electronic autonomous control	code	01313	01314	01315	01316	01317
Silver with control for remote keypad	code	01323	01324	01325	01326	01327

MODEL		B12+ 2 pipes SLR+ version with radiant panel				
		SLR+200	SLR+400	SLR+600	SLR+800	SLR+1000
(a) Total cooling capacity	kW	0,87	1,82	2,78	3,45	3,91
Sensible cooling capacity	kW	0,62	1,29	1,98	2,67	2,97
Water flow rate	l/h	149	314	478	593	673
Water pressure drops	kPa	7,6	8,9	23,9	19,7	26,4
(b) Heating capacity 50°C	kW	1,18	2,54	3,55	4,57	5,31
Water flow rate (50°C)	l/h	175	362	504	665	786
Water pressure drops (50°C)	kPa	3,5	6,4	16,3	16,7	19,9
(c) Heating capacity	kW	2,04	4,21	5,87	7,6	8,9
Water flow rate (70°C)	l/h	179	369	515	667	781
Water pressure drops (70°C)	kPa	3,7	6,4	14,3	15,3	19,1
Max. static heating capacity (50°C)	W	365	424	502	621	767
Max. static heating capacity (70°C)	W	593	707	836	1035	1279
Coil water content	l	0,47	0,8	1,13	1,46	1,8
Radiator plate water content	l	0,3	0,5	0,6	0,7	0,9
Maximum operating pressure	bar	10	10	10	10	10
Water pipe fittings inches	in	Eurokonus 3/4	Eurokonus 3/4	Eurokonus 3/4	Eurokonus 3/4	Eurokonus 3/4
(d) Air flow rate max	m³/h	150	300	430	535	600
(d) Air flow rate min	m³/h	55	155	250	370	425
Supply voltage	V/ph/Hz	230/1/50	230/1/50	230/1/50	230/1/50	230/1/50
Max power input	W	9	19	20	24	27
Max power input at minimum speed	W	2	2	2	3	3
(g) Max air flow sound pressure	dB(A)	41	43	43	43	44
(g) Min air flow sound pressure	dB(A)	25	28	29	26	28

20 TECHNICAL DATA



VERSION SLR+ (with radiant panel)		SLR+ 200	SLR+ 400	SLR+ 600	SLR+ 800	SLR+ 1000
A	mm	697	897	1097	1297	1497
B	mm	579	579	579	579	579
C	mm	659	659	659	659	659
D	mm	129	129	129	129	129
Weight	kg	15	17	21	24	28

- (a) Water temperature at coil inlet 7°C, water temperature at coil outlet 12°C, Room temperature 27° C db and 19°C wb.
 (b) Water temperature at coil inlet 50°C, water flow rate as for cooling + plate, ambient air temperature at inlet 20°C.
 (c) Water temperature at coil inlet 70°C, water temperature at coil outlet 60°C, ambient air temperature at inlet 20°C.
 (d) Air flow measured with clean filters.
 (g) Sound pressure measured according to standard ISO 7779.

SLR+ 2 pipe system

Model with radiant panel for vertical installation only.



CONFIGURATIONS

21



1

CONTROL KIT

AUTONOMOUS
CONTROL



or

CONTROL FOR
REMOTE KEYPAD



+ B0373



2

PLUMBING KIT

B0139



or

B0641



or

B0635



or

B0205



3

DESIGN KIT

B0157 / B0158



B0171 / B0180

